

Raritan River & Bay Communities Region

A future heavy rainfall event could cause

\$380 million

in losses in South River.

A coastal storm like Sandy could cause

\$740 million

in losses in South River.

Un futuro evento de fuertes lluvias podría causar

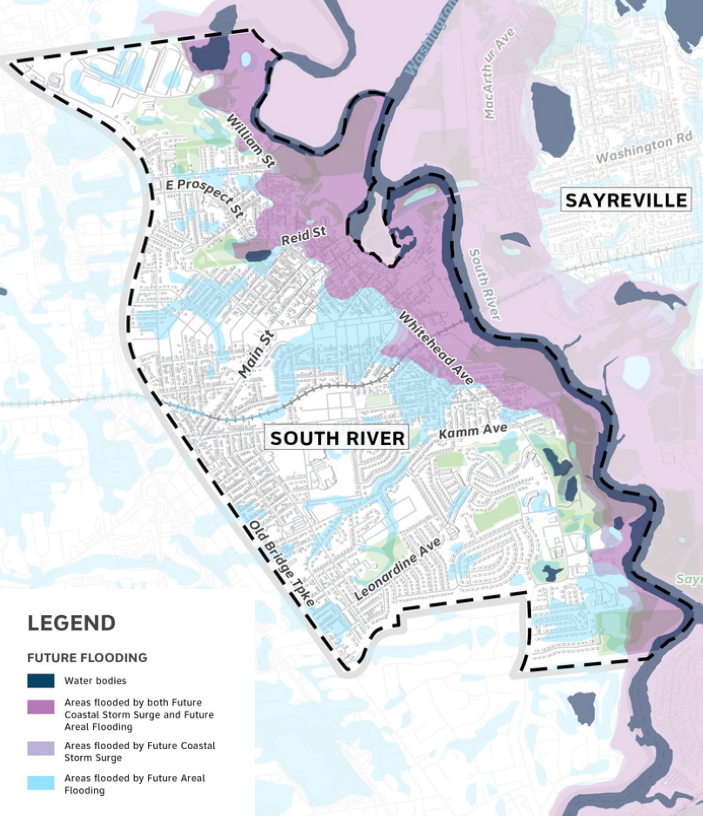
\$380 millones

en pérdidas en South River.

Una tormenta costera como Sandy podría causar





\$740 millones

en pérdidas en South River.



LEGEND

FUTURE FLOODING

-  Water bodies
-  Areas flooded by both Future Coastal Storm Surge and Future Areal Flooding
-  Areas flooded by Future Coastal Storm Surge
-  Areas flooded by Future Areal Flooding

The Resilient NJ Raritan River and Bay Communities program aims to develop a roadmap to address flooding in the municipalities of Carteret, Old Bridge, Perth Amboy, South Amboy, Sayreville, South River, and Woodbridge. This joint effort between the municipalities, the New Jersey Department of Environmental Protection (NJDEP), Middlesex County and local YMCAs provides an opportunity for the area to become more resilient and improve the quality of life for its more than 300,000 residents.

El programa Resilient NJ Raritan River and Bay Communities tiene como objetivo desarrollar una hoja de ruta para abordar las inundaciones en los municipios de Carteret, Old Bridge, Perth Amboy, South Amboy, Sayreville, South River y Woodbridge. Este esfuerzo conjunto entre los municipios, el Departamento de Protección Ambiental de Nueva Jersey (NJDEP), el condado de Middlesex, las YMCA locales y brinda una oportunidad para que el área se vuelva más resistente y mejore la calidad de vida de sus más de 300,000 residentes.



**Know Your Risk.
Scan Here:**

www.resilient.nj.gov/rbc

Resilient New Jersey

