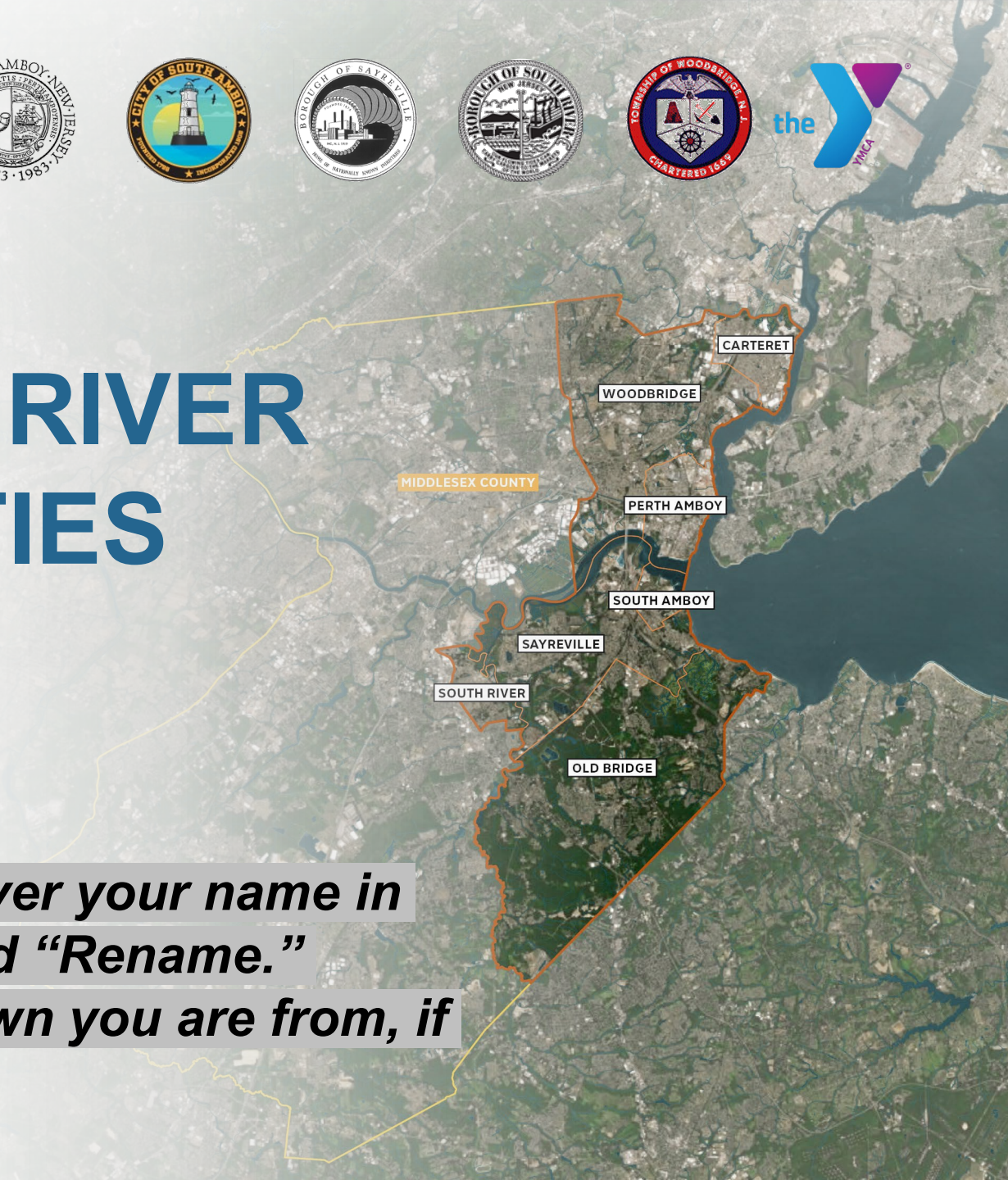


# WELCOME TO THE RESILIENT RARITAN RIVER AND BAY COMMUNITIES COMMUNITY MEETING

***Oct. 14<sup>th</sup>, 5:30 to 7 PM***

***Please update your name by hovering over your name in the participant window, click "More," and "Rename."***

***Provide your name and indicate what town you are from, if applicable.***



# How will today's meeting work?

**1** Short presentation (30 min) –  
*Please stay on mute, respond to and ask questions in the chat*

**2** Q&A (15 min) –  
*Feel free to ask questions by raising your hand or in the chat*

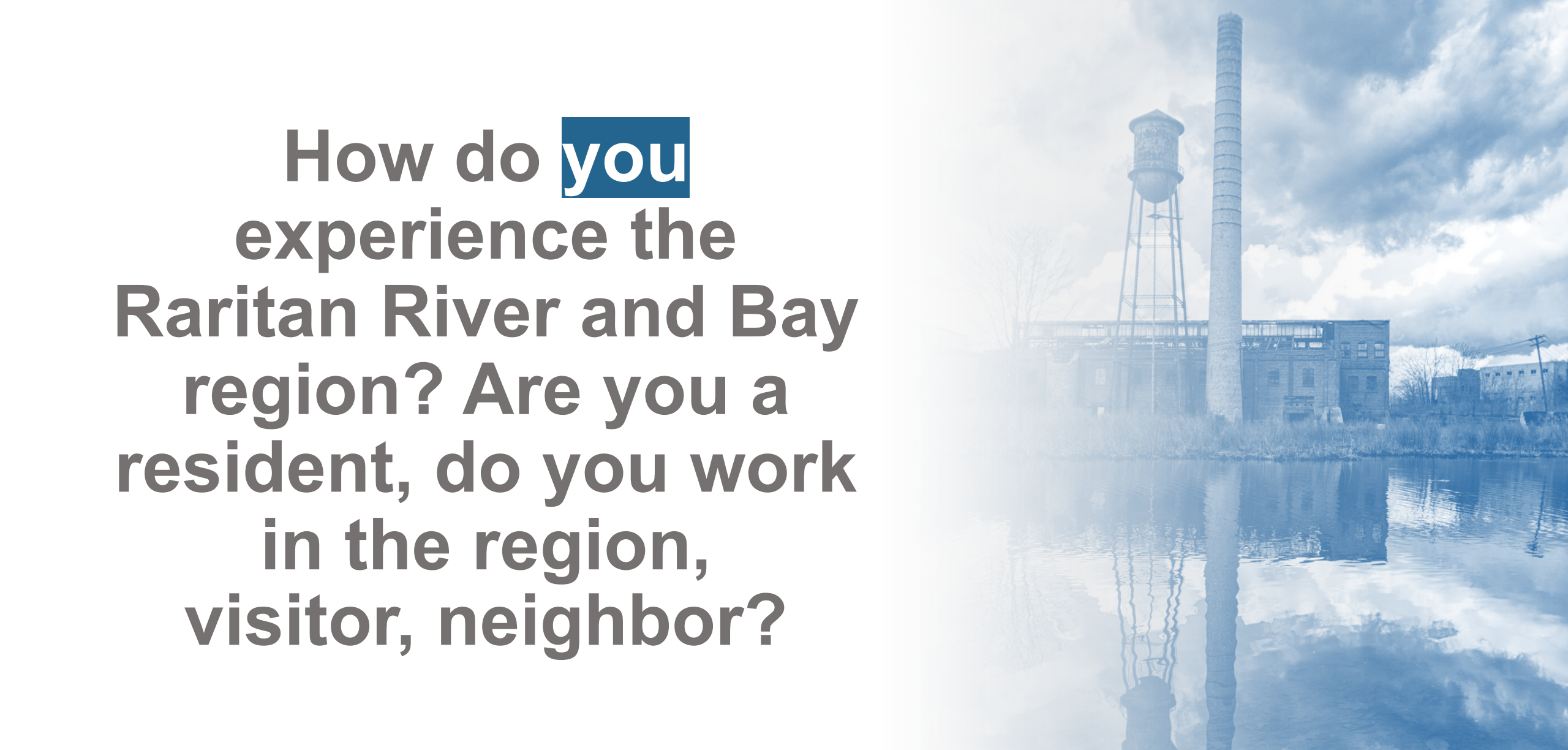
**3** Breakout Discussions (45 min) –  
*Please engage actively through voice and chat*

*We will not reconvene as a group after the breakout groups.*

We are live streaming the presentation portion of the meeting and will post on YouTube and Facebook.

We will record breakouts for use by the project team, but will not share publicly.





**How do **you**  
experience the  
Raritan River and Bay  
region? Are you a  
resident, do you work  
in the region,  
visitor, neighbor?**

**If you are watching on Facebook Live and would like to join the Zoom meeting, you can join by going to [www.tinyurl.com/Oct-14th-2021](https://www.tinyurl.com/Oct-14th-2021) or by calling 646-558-8656.**

**Meeting ID: 824 9571 0441**

# What we're here to share today:

- What is the **Resilient Raritan River and Bay Project?**
- What are the **risks** facing the region?
- What do we mean when we say **resilience?**
- How will the plan help **the region become more resilient?**
- What have we heard from the **community** so far?
- How will we continue to **work with you?**

**If you are watching on Facebook Live and would like to join the Zoom meeting, you can join by going to [www.tinyurl.com/Oct-14th-2021](https://www.tinyurl.com/Oct-14th-2021) or by calling 646-558-8656.**

**Meeting ID: 824 9571 0441**



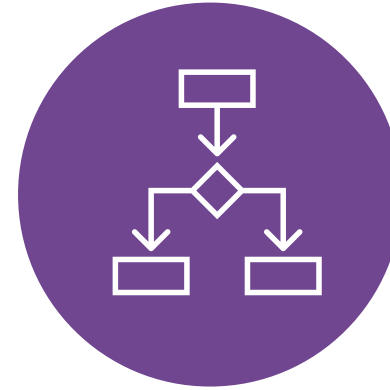
# What we want to hear from you:



What do you love about your community?



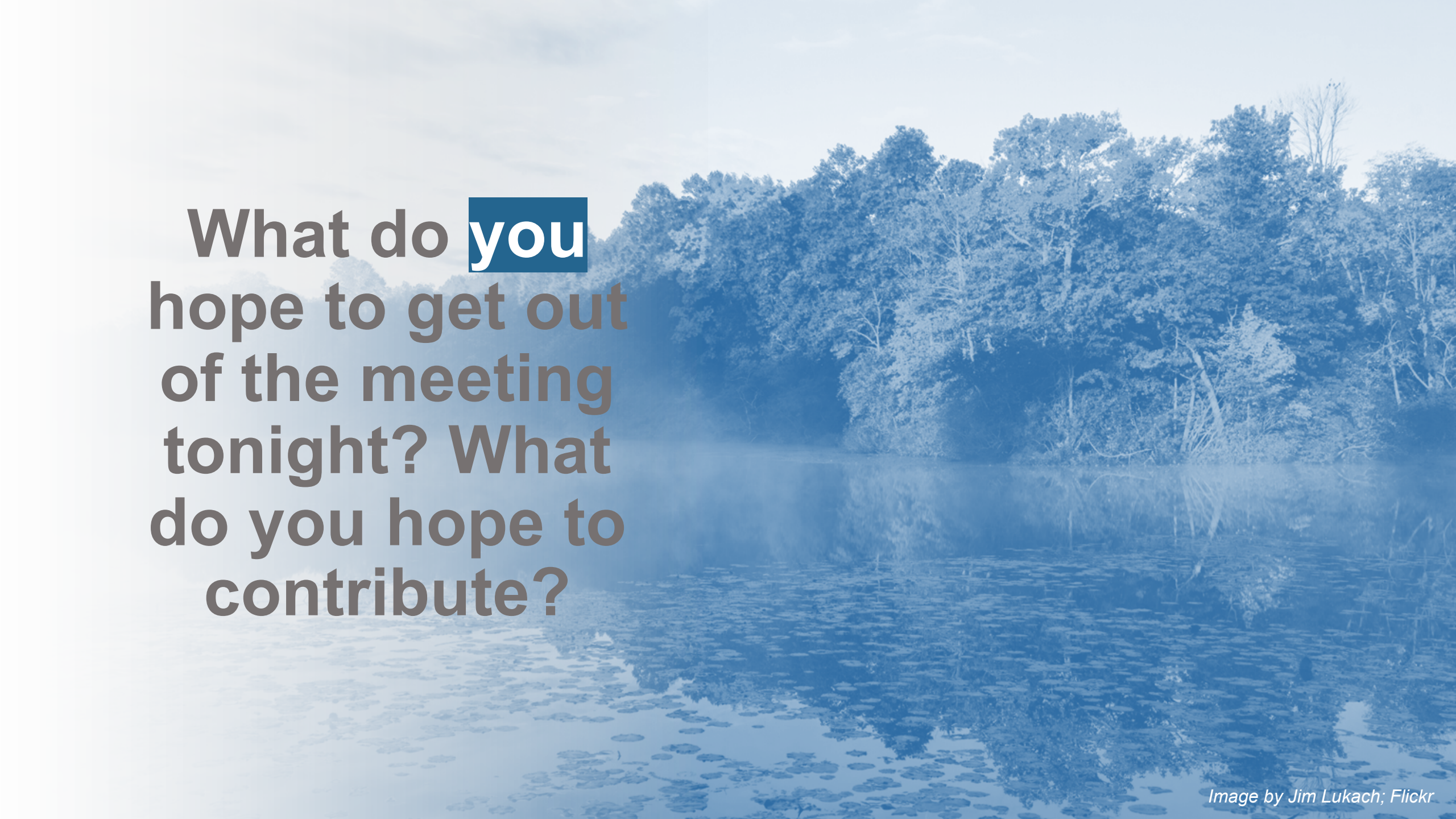
How have you been impacted by flooding?



What factors are most important when making decisions to reduce flood risk?



How can this process add value to and improve your quality of life?

The background image is a serene landscape photograph of a pond. The water is calm, reflecting the sky and the surrounding trees. In the foreground, several lily pads float on the water's surface. The far bank is lined with a thick forest of trees. The entire image has a monochromatic blue tint.

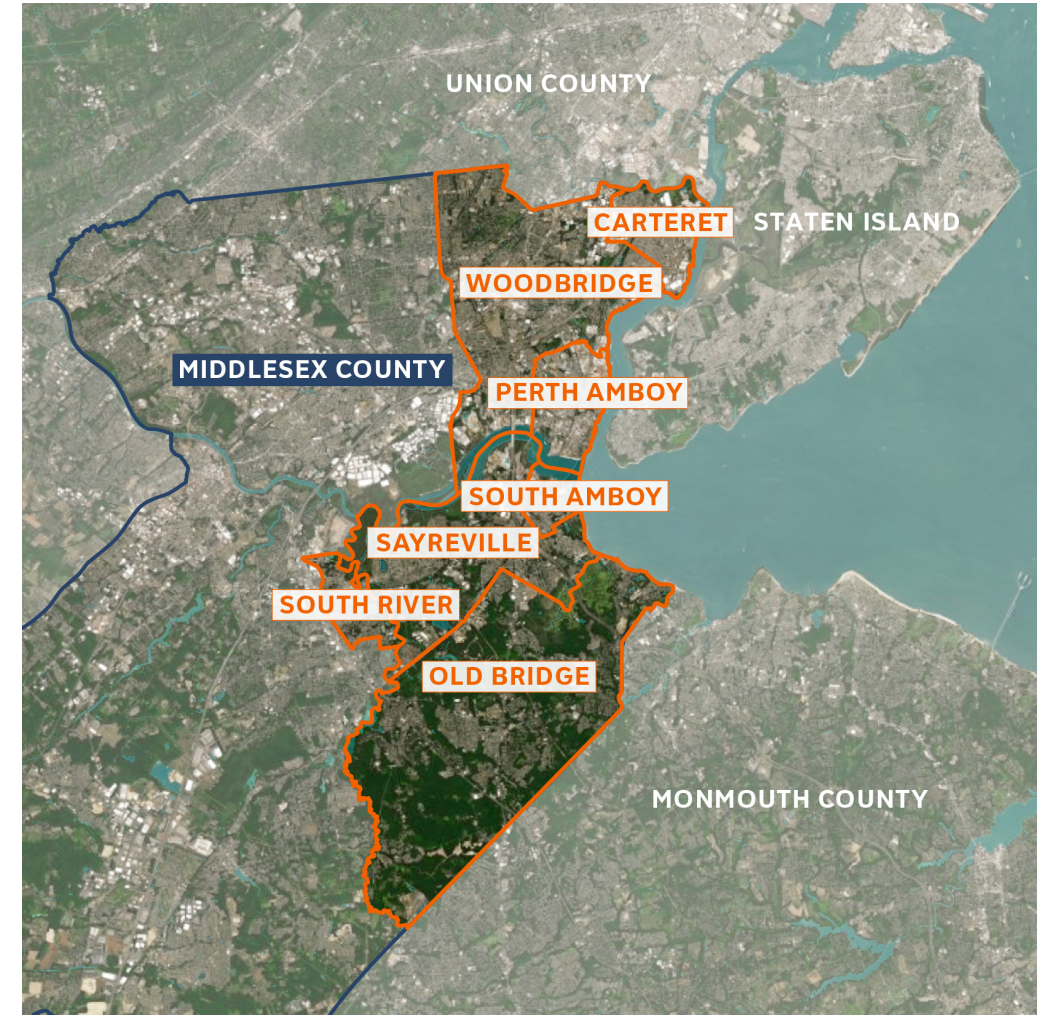
**What do **you**  
hope to get out  
of the meeting  
tonight? What  
do you hope to  
contribute?**



# PROJECT TEAM

## RESILIENT RARITAN RIVER AND BAY COMMUNITIES

- The Resilient NJ (RNJ) Program, administered through the New Jersey Department of Environmental Protection (**NJDEP**), includes initiatives in four regions of the state, including **Raritan River and Bay Communities**.
- **Resilient NJ – Raritan River and Bay Communities** is a partnership between **Middlesex County, Old Bridge, Woodbridge, Sayreville, South Amboy, South River, Carteret, Perth Amboy**, and the **YMCAs of Middlesex County**.



Resilient Raritan River and Bay Communities  
Project Area



# OPENING REMARKS



# IDA IMPACTS

## SCENES FROM AROUND MIDDLESEX COUNTY



Source: [The Lakewood Scoop](#)  
Carteret Flooding



Source: [News 12](#)  
Woodbridge Flooding



Source: [Youtube](#)  
South River Flooding



Source: [News 12 Bronx](#)  
Middlesex County Flooding



Source: [CBS New York](#)  
Middlesex County Flooding

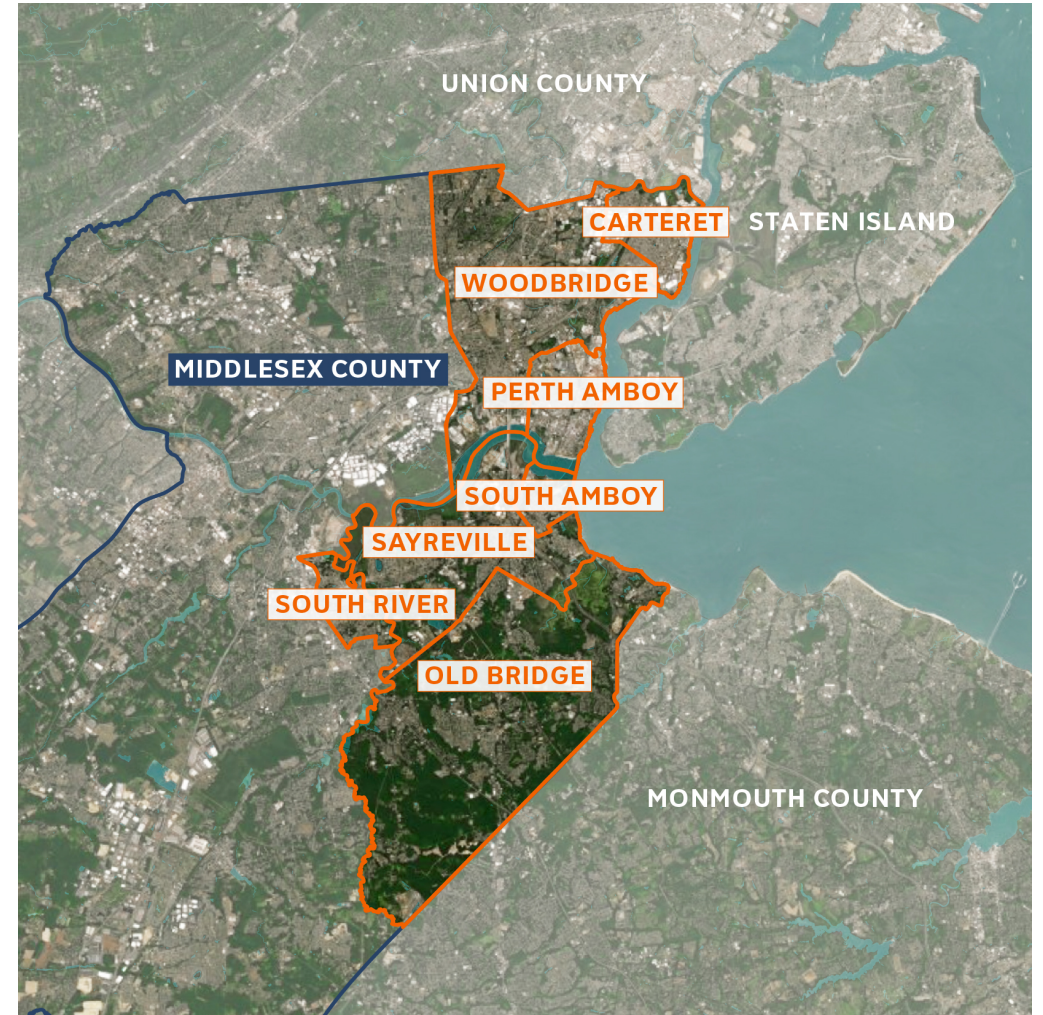




# PROJECT OVERVIEW

## RARITAN RIVER AND BAY COMMUNITIES

- The project is focused on developing a **regional resilience action plan** to address **flood-related hazards**.
- **Input from the people who live, work, and play** in the region will be critical to the success of the program.

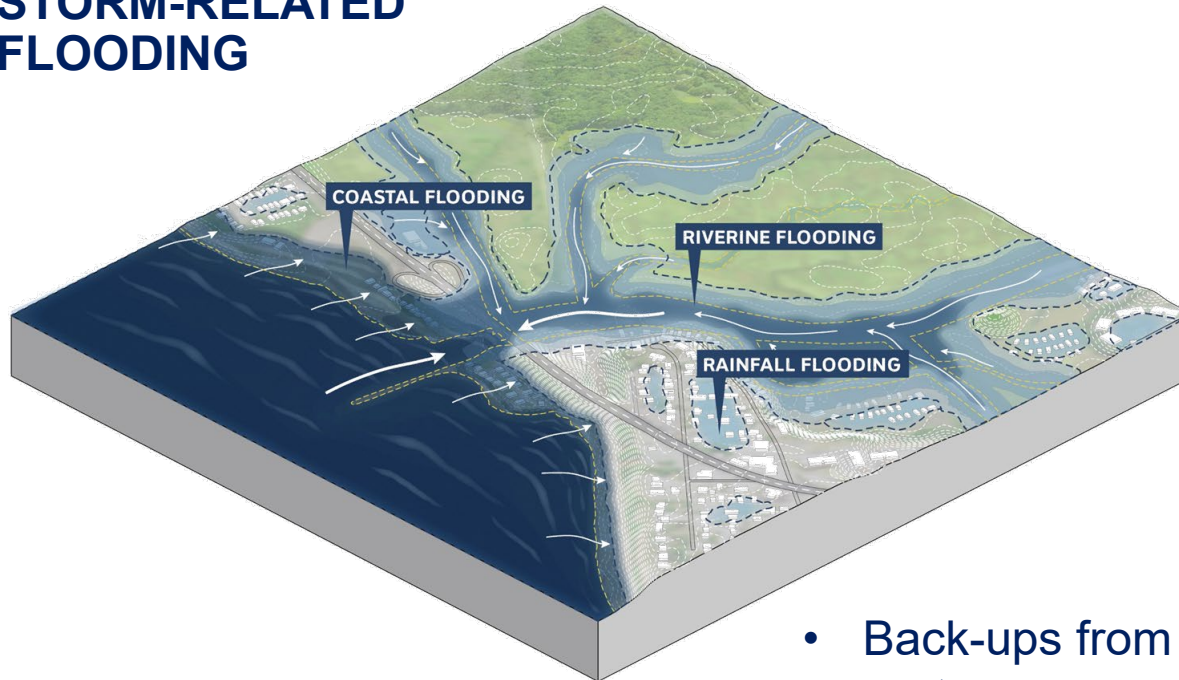


**Resilient Raritan River and Bay Communities  
Project Area**



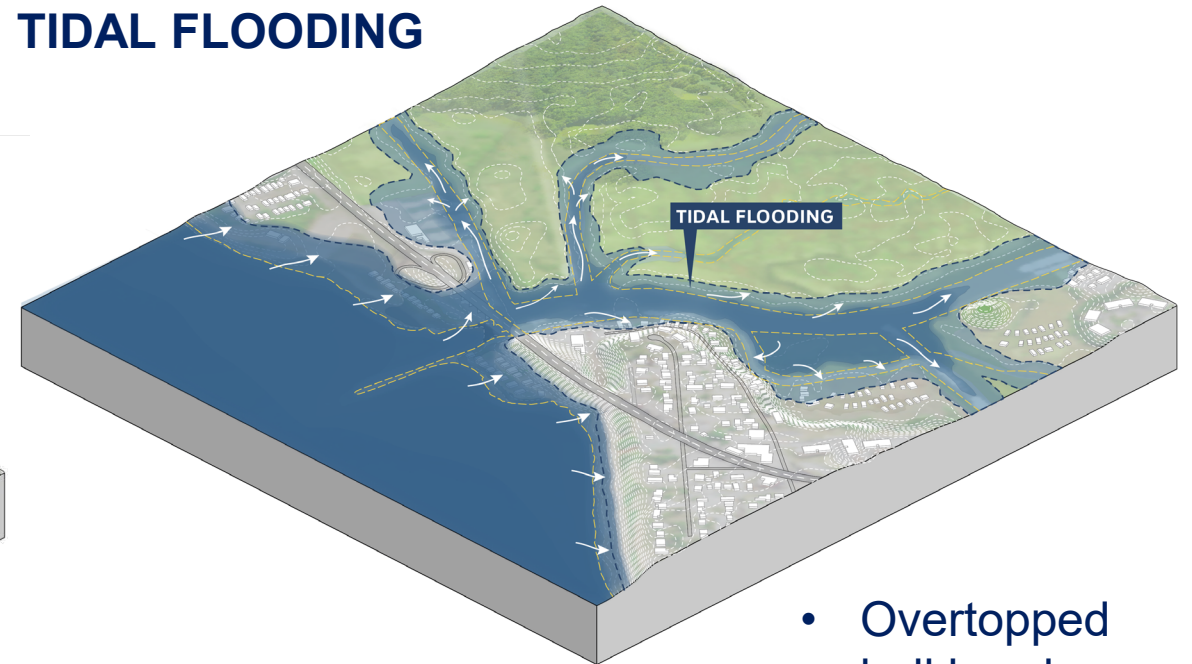
# WHAT ARE THE FLOOD-RELATED RISKS THE REGION FACES?

## STORM-RELATED FLOODING



- Back-ups from drainage systems
- Ponding at low elevations
- Storm surge

## TIDAL FLOODING



- Overtopped bulkheads
- Back-ups in drainage systems

# WHAT IS RESILIENCE?

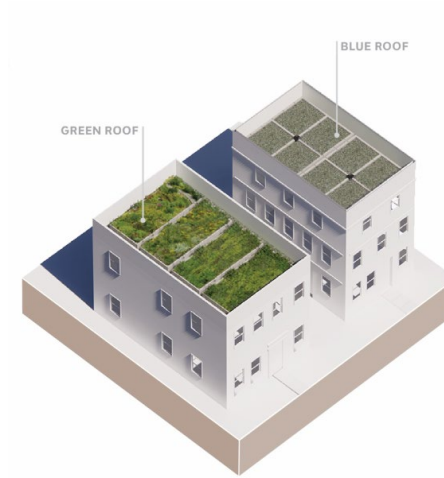
**Resilience is the ability to adapt to changing conditions and grow in the face of challenges.**

**In the context of flooding, we mean shaping communities that have strong social fabrics and infrastructure that can bounce back after storms.**

# WHAT COULD THIS PLAN INCLUDE?



**PHYSICAL AND NATURE-  
BASED INFRASTRUCTURE**



**POLICIES, ORDINANCES,  
AND GOVERNANCE**

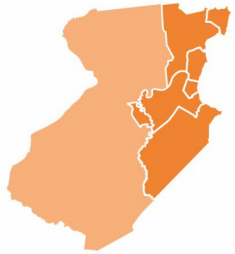


**OUTREACH, EDUCATION,  
AND CAPACITY BUILDING**



# PROJECT GOALS

## RARITAN RIVER AND BAY COMMUNITIES



Build off ongoing resilience planning by identifying and addressing **gaps and opportunities** within the region

Ensure **representation and participation from socially vulnerable populations** to address their needs and risks

Develop **innovative and implementable solutions** that increase resilience in both the short- and long-term

Enhance the value and integrity of the **ecological, recreational, and economic resources** in the region

Ensure **collaboration** among a wide variety of stakeholders

# DIVERSITY, EQUITY & INCLUSION

## GOALS (CONSISTENT WITH MIDDLESEX DESTINATION 2040)

- 1) **WELCOMING** marginalized groups, in particular Black and Brown people, and ensuring that they have access to the resources and opportunities necessary to connect, belong, grow and improve the quality of their lives;
- 2) **ACKNOWLEDGING** and eliminating disparities along race, class, gender, disability status and other dimensions of diversity;
- 3) **EXPANDING** choice and for Black and Brown people, recognizing a special responsibility to plan opportunity for the needs of those who have been historically discriminated against;
- 4) **FOSTERING** racial and economic integration;
- 5) **ENSURING** diversity and inclusion in decision-making processes.

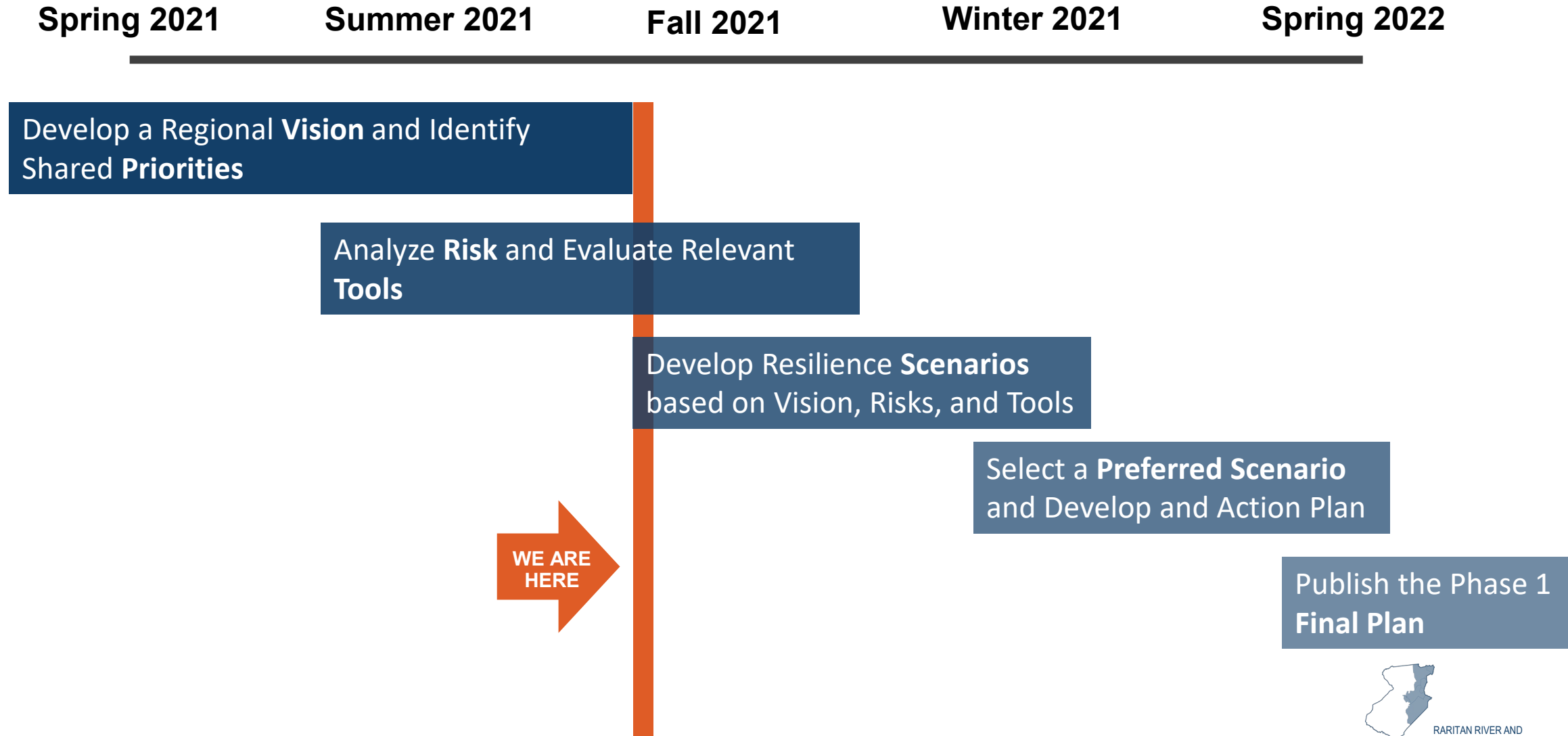
## SOME WAYS RNJ RARITAN RIVER AND BAY COMMUNITIES IS WORKING TO ACCOMPLISH THIS INCLUDE:

Reaching out to potential partner organizations to help us **make our engagement more welcoming** and reaching the people they serve to **receive input**

Providing as many **different possible ways to engage** as easily as possible

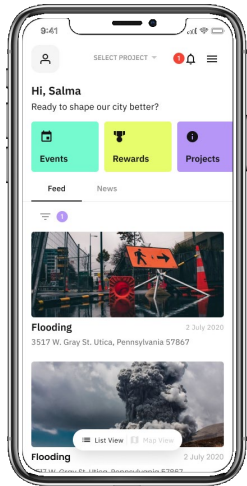
Providing ways to get and receive **information in multiple languages**

# PROJECT SCHEDULE

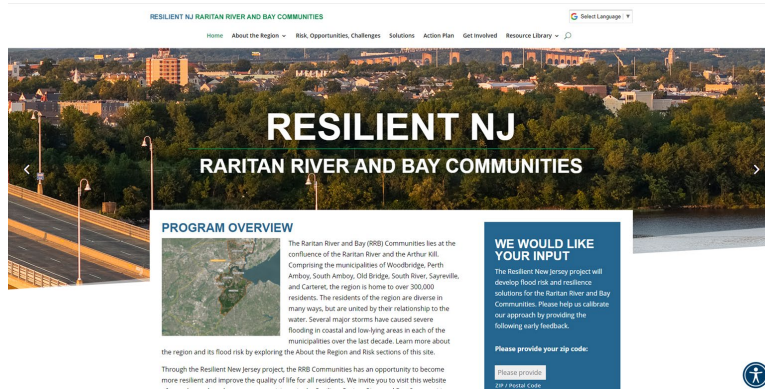




# ENGAGEMENT OPPORTUNITIES



Download  
the IRYS APP



Share thoughts through the  
website: [www.resilient.nj.gov/rrbc](http://www.resilient.nj.gov/rrbc)

Resilient NJ - Raritan River and Bay Communities - Vision and Priorities (individual form)

The Resilient NJ project will develop flood risk and resilience solutions for the Raritan River and Bay Communities, which include Perth Amboy, South Amboy, Carteret, Sayreville, South River, Old Bridge, and Woodbridge. The project is funded and spearheaded by NJDEP, and is led by the municipalities, Middlesex County, and the Lower Raritan Watershed Partnership community-based organization.

Please use this form to provide your feedback about what you value in your community and your vision for your community's future, or any other feedback you may have. We will use this feedback to guide development of an action plan to address flood risks. Thank you for your input!

\* Required

1. Please provide your zip code: \*

Enter your answer

2. Where have you recently seen or experienced flooding? Where have you seen flooding in the past? How does flooding impact you?

Enter your answer

Complete the survey



Share your artwork through  
email or social media!

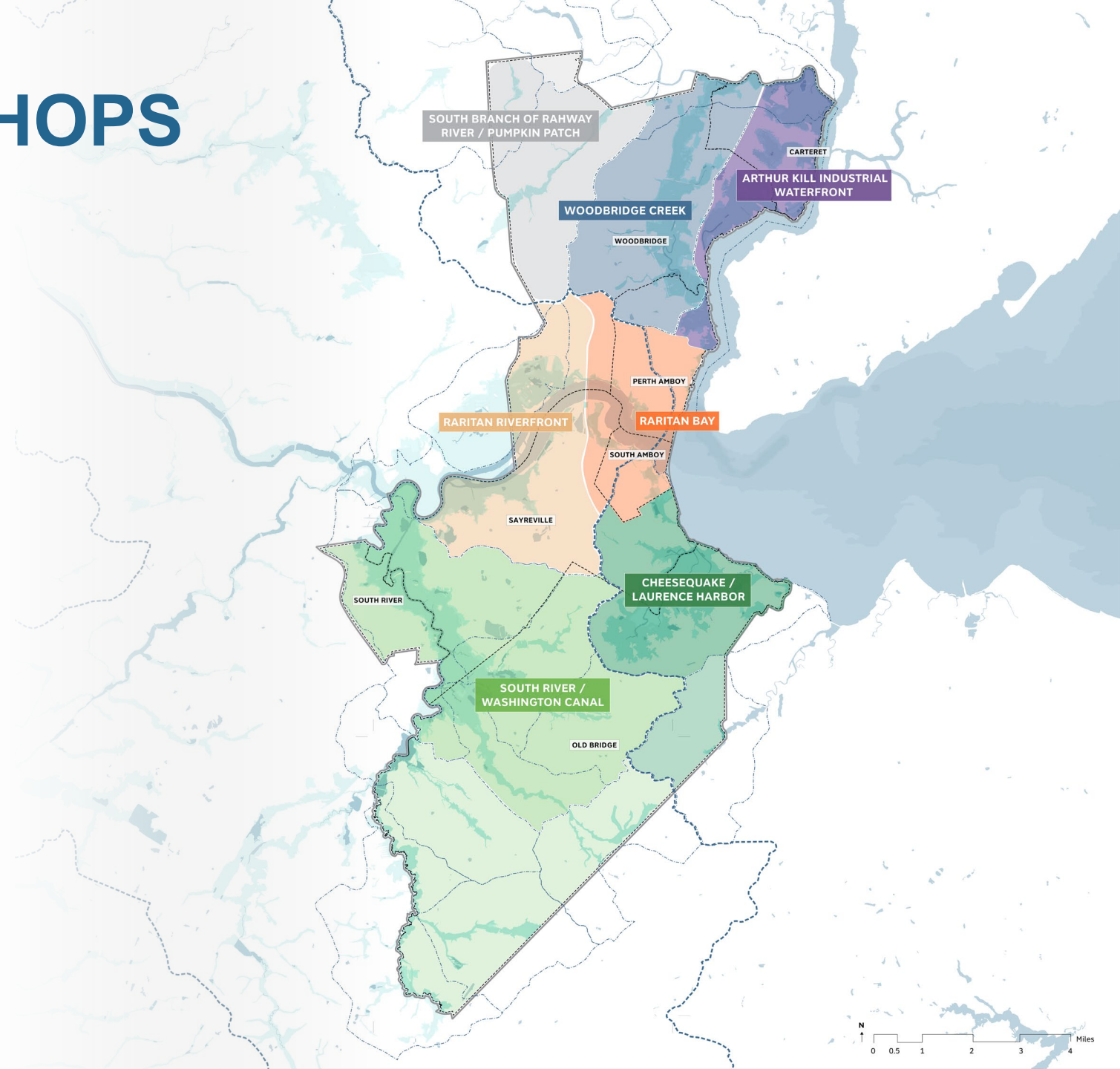
Stay tuned for more information on in-person workshops focused on local areas!

# UPCOMING WORKSHOPS

- Focus on specific geographic areas
- Explain causes of flooding
- Get input on critical community assets
- Share information on ongoing projects to reduce risk
- Discuss potential resiliency strategies

## STUDY AREAS

- Arthur Kill Industrial Waterfront
- Woodbridge Creek
- South Branch of Rahway River / Pumpkin Patch
- Raritan Riverfront
- Raritan Bay
- South River / Washington Canal
- Cheesequake / Laurence Harbor / Raritan Bay Waterfront Park
- Watershed Management Areas
- Subwatersheds
- Municipal Boundaries

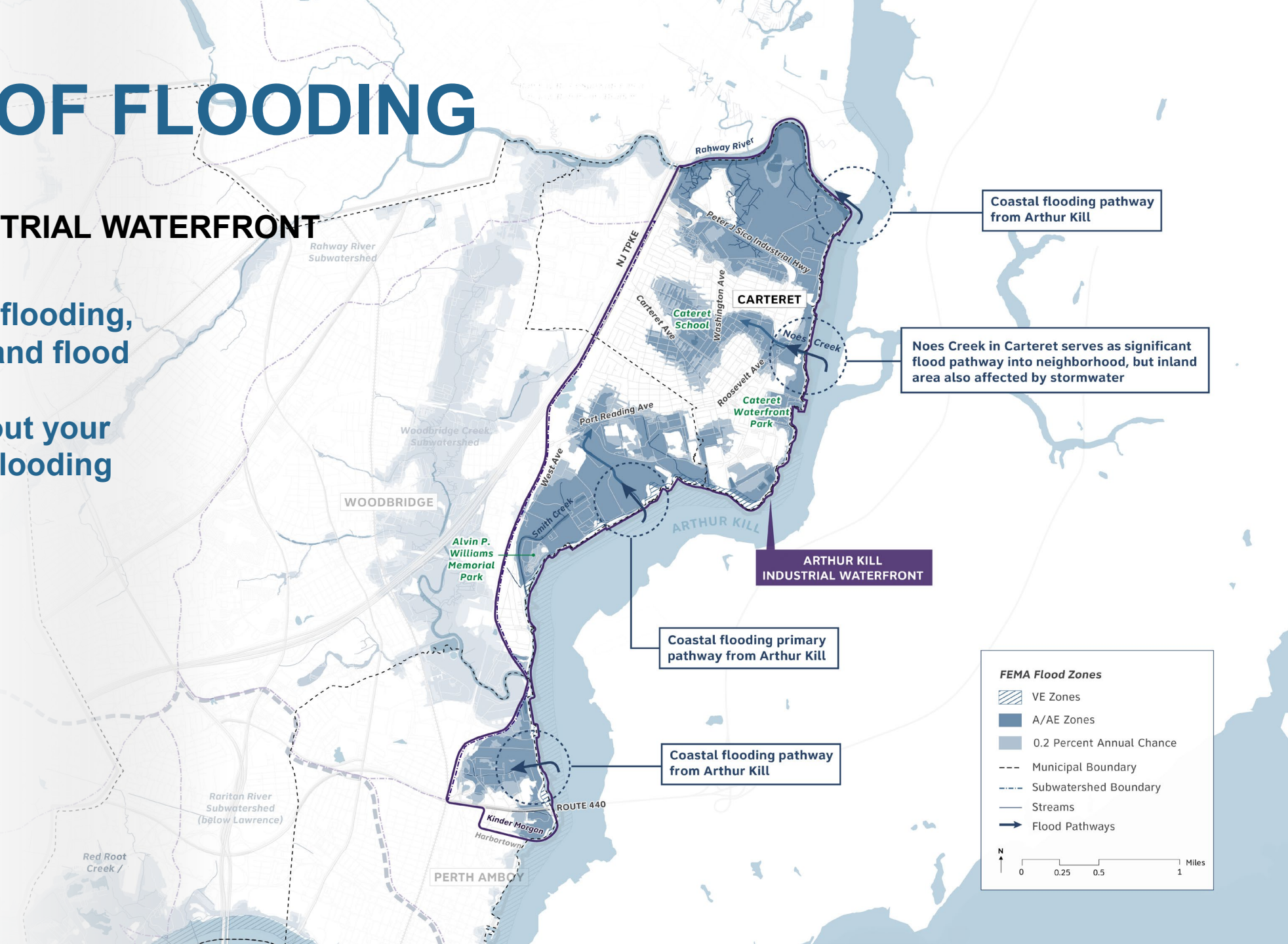


# CAUSES OF FLOODING

## EXAMPLE

### ARTHUR KILL INDUSTRIAL WATERFRONT

- Explain causes of flooding, types of flooding and flood pathways
- Hear from you about your experiences with flooding





# VISION

## EXAMPLE

### WOODBIDGE CREEK FOCUS AREA

- Share feedback gathered so far specific to this area
- Hear from you what changes you want to see for yourself and future generations in this area

“  
LAND ALONG THE  
WOODBIDGE RIVER IS  
WETLANDS AND FLOOD  
ZONES. NOTHING SHOULD BE  
BUILT. IT SHOULD BE AN OPEN  
SPACE BUFFER FOR PUBLIC  
USE OR PRESERVATION.”

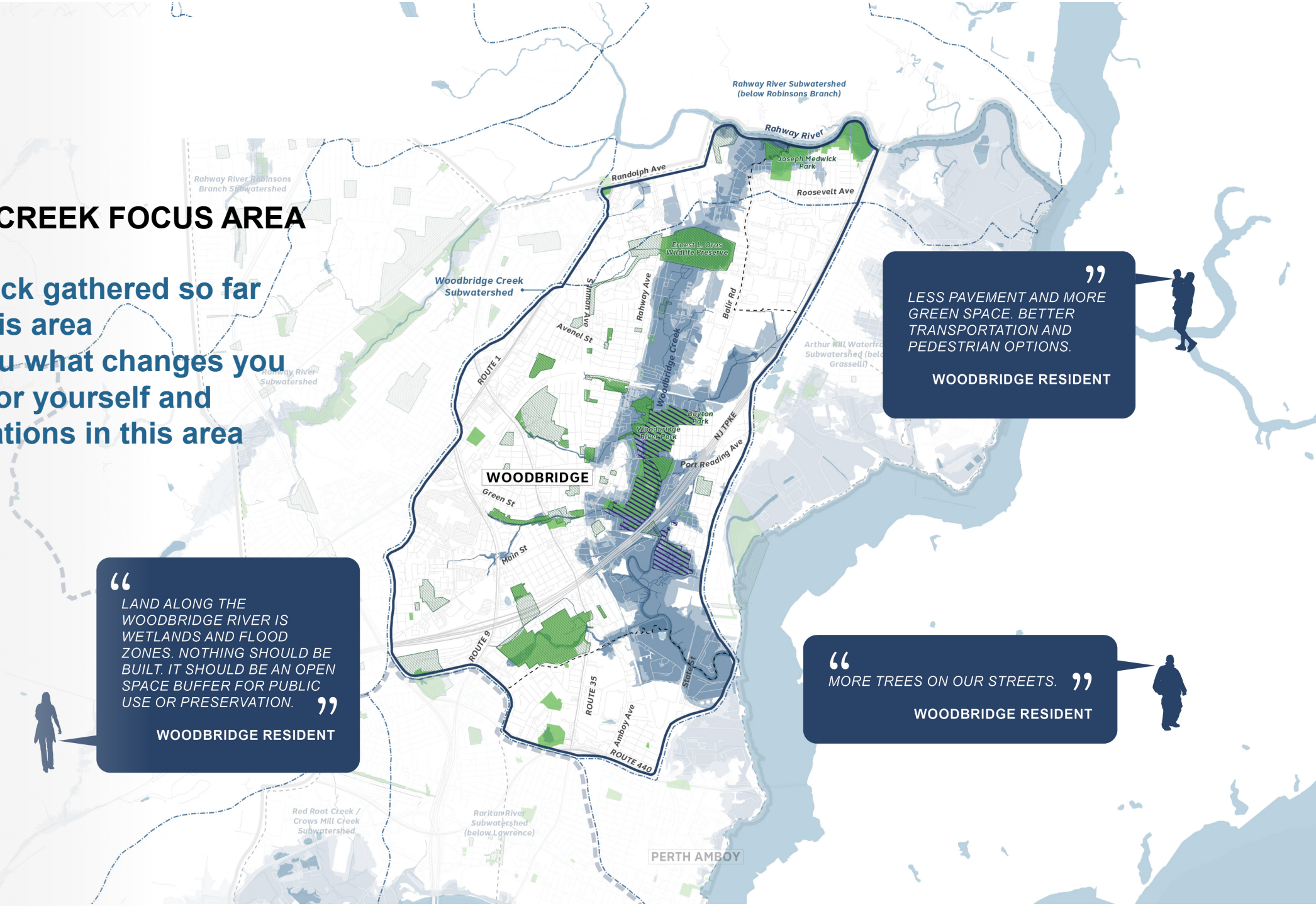
WOODBIDGE RESIDENT

”  
LESS PAVEMENT AND MORE  
GREEN SPACE. BETTER  
TRANSPORTATION AND  
PEDESTRIAN OPTIONS.

WOODBIDGE RESIDENT

“  
MORE TREES ON OUR STREETS.”

WOODBIDGE RESIDENT





# CRITICAL COMMUNITY ASSETS

## EXAMPLE: SOUTH RIVER/WASHINGTON CANAL FOCUS AREA

- Share critical assets inventory gathered so far
- Get input from you on critical community assets



### INFRASTRUCTURE

Stormwater & Wastewater, Power Generation, Communications, Waste Disposal



### TRANSPORTATION

Rail, Bus, Bike Lanes, Airports, Ferry Terminals, Port Facilities



### ECOSYSTEM & ENVIRONMENTAL HEALTH



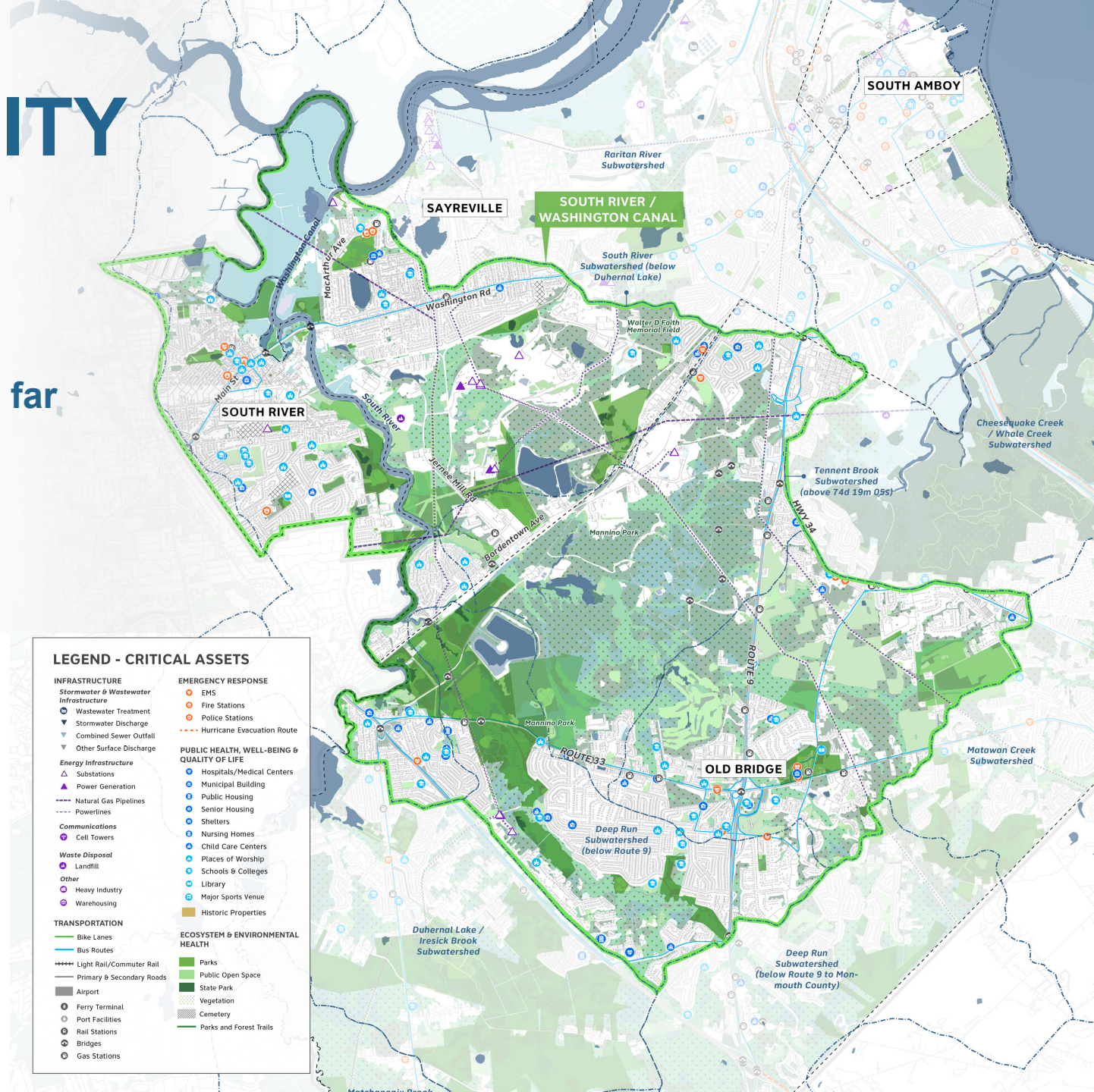
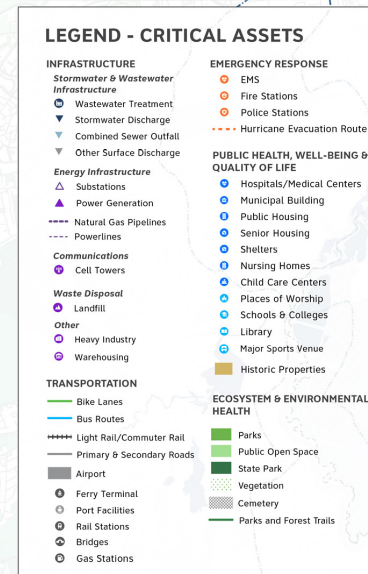
### EMERGENCY RESPONSE

EMS, Fire Stations, Police Stations, Hurricane Evacuation Routes



### PUBLIC HEALTH, WELL-BEING & QUALITY OF LIFE

Hospitals, Municipal Buildings, Public Housing, Shelters, Nursing Homes, Places of Worship, Schools, Libraries





# ONGOING AND PLANNED PROJECTS

- Share information on ongoing projects to reduce risk region-wide



## ARTHUR KILL WATERSHED INFRASTRUCTURE PROJECTS

CA1. Rahway River Basin, New Jersey Coastal Storm Risk Management Feasibility Study  
CA2. DuPont Chemical Site Brownfield Remediation  
CA3. Carteret Marina Renovation  
CA4. Carteret Riverwalk  
WB1. Roots for Rivers Woodbridge  
WB2. Alvin P. Williams Memorial Park  
WB3. Woodbridge Marina Expansion  
WB4. Reconstruction of Port Reading & Woodbridge Creek Culvert  
WB5. Reconstruction of Cove Creek Culvert  
WB6. Reconstruction of Route 35 Culvert  
PA1. Perth Amboy High School (Emergency Shelter)  
PA2. Rudyk Park Semi-permeable Plaza  
PA3. Harbortown Infrastructure and Walkway  
PA4. Route 35 Road Diet  
PA5. Middlesex County Park  
PA6. NYNJHAT Study Alternatives 3A & 3B - Arthur Kill Gate  
PA7. Bulkhead Repair and Beach Nourishment

## Perth Amboy Municipal Projects

Perth Amboy CSO Mandate  
Woodbridge Municipal Projects  
Woodbridge Town Center Advanced Microgrid

## LOWER RARITAN, SOUTH RIVER & LAWRENCE WATERSHED INFRASTRUCTURE PROJECTS

PAB. Perth Amboy Station Renovation  
PA9. Second Street Park  
PA10. Raritan River Bridge Replacement  
PA11. Middlesex Greenway Waterfront Spur  
PA12. Route 9 and 35 Victory Circle Elimination Project  
WB7. CPV Woodbridge Energy Center  
WB8. MCUA Restoration, Upgrade, and Flood Mitigation of the Edison Pump Station  
WB9. MCUA Flood Mitigation and Permanent Restoration of the Sayreville Pump Station  
WB10. South River Ecosystem Restoration and Flood Resiliency Enhancement Project

## MONMOUTH WATERSHED INFRASTRUCTURE PROJECTS

SA1. South Amboy Ferry Terminal  
OB1. Laurence Harbor Beach Replenishment

## LEGEND

### Resilience Projects - Infrastructure

- Completed
- Planning / Construction
- Conceptual / Unknown
- Municipal Boundary
- Study Area Boundary

- Redevelopment Areas
- Open space conservation / Public quasi public zones

### FEMA FLOOD ZONES

- A/AE Zones
- Watershed Boundary



# RESILIENCE TOOLKIT

## EXAMPLE

- Discuss potential resiliency strategies

### TOOLKIT ICON CATALOG

#### STRATEGY



PROTECT ASSETS FROM WATER



ADAPT ASSET TO PRESENCE OF WATER



MOVE ASSET AWAY FROM WATER

#### HAZARD ADDRESSED



COASTAL



RIVERINE



STORMWATER



SEA LEVEL RISE

#### SCALE OF IMPLEMENTATION



SITE



LINEAR



MULTIPLE SITES

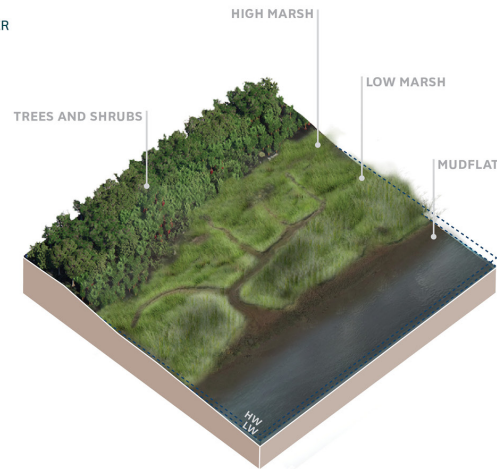


NETWORK



ADAPT TO PRESENCE OF WATER

### WETLAND PRESERVATION/ RESTORATION/EXPANSION



Wetland restoration involves returning the natural functions of former or degraded wetlands that have been filled, drained, or impounded to promote stable water exchanges into and out of the wetland.

CATEGORY: **RIPARIAN MANAGEMENT**

#### HAZARD ADDRESSED



RIVERINE



STORMWATER

#### SCALE OF IMPLEMENTATION



SITE

#### CO-BENEFITS



ECOLOGICAL



EDUCATIONAL



RECREATIONAL

#### LEVEL OF POTENTIAL DISRUPTION

CONSTRUCTION TIME |-----|+-----|

IMPACT TO PUBLIC ACCESS AND USE |-----|+-----|

#### APPLICABLE AREAS



RIVERINE



OPEN SPACE

#### CONSTRAINTS AND CONSIDERATIONS

COSTS \$ |-----|+-----|\$\$\$

PERMITTING [ ] |-----|+-----| [ ] [ ] [ ]

CONSTRUCTABILITY [ ] |-----|+-----| [ ] [ ] [ ]

**Q & A**

# BREAKOUT GROUPS

## *WHAT WE'LL COVER TOGETHER*



### **Flood Experiences**

- Where / how do you currently experience flooding?
- How does flooding affect your life / community?



### **Community Vision**

- What do you value most about your community?
- What changes do you want to see for yourself and future generations?
- What are distinguishing features of this region?

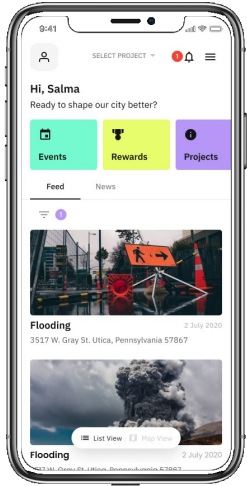


### **Evaluation Criteria**

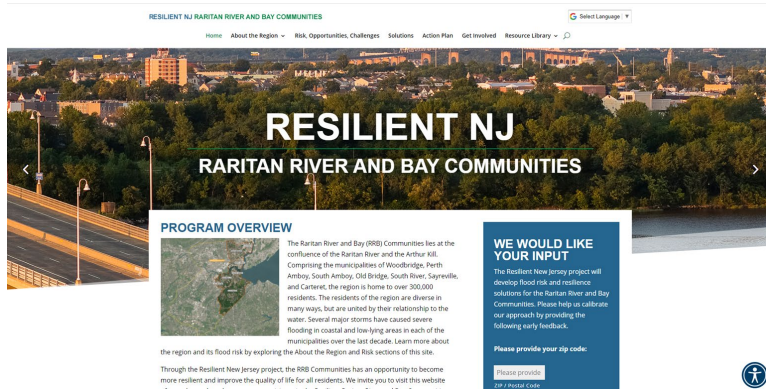
- What is the most important factor to consider when choosing actions that could reduce flood risk in your community?



# ANYTIME ENGAGEMENT OPPORTUNITIES



Download  
the IRYS APP



Share thoughts through the  
website: [www.resilient.nj.gov/rrbc](http://www.resilient.nj.gov/rrbc)

Resilient NJ - Raritan River and Bay Communities - Vision and Priorities (individual form)

The Resilient NJ project will develop flood risk and resilience solutions for the Raritan River and Bay Communities, which include Perth Amboy, South Amboy, Carteret, Sayreville, South River, Old Bridge, and Woodbridge. The project is funded and spearheaded by NJDEP, and is led by the municipalities, Middlesex County, and the Lower Raritan Watershed Partnership community-based organization.

Please use this form to provide your feedback about what you value in your community and your vision for your community's future, or any other feedback you may have. We will use this feedback to guide development of an action plan to address flood risks. Thank you for your input!

\* Required

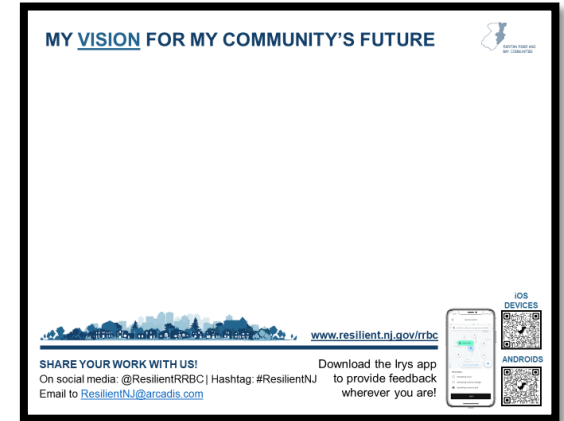
1. Please provide your zip code: \*

Enter your answer

2. Where have you recently seen or experienced flooding? Where have you seen flooding in the past? How does flooding impact you?

Enter your answer

Complete the survey



Share your artwork through  
email or social media!

Share thoughts on the project hotline:  
**732-661-3808**  
(English, Spanish, Portuguese, Mandarin,  
Hindi, Polish)

Engage on social media:  
**@ResilientRRBC**

Share thoughts by email:  
**[ResilientRRBC@dep.nj.gov](mailto:ResilientRRBC@dep.nj.gov)**